

Wind Image Suite -
all your image integration
needs within:

NEW!
Wind Image Stand Alone

Wind Image for ArcMap

Wind Image for ArcPad

Wind Image Transfer

See back for more details

Solution compatibility:

ArcMap 9.2 or better
ArcPad 7.1
Ricoh 500 SE Camera
Trimble Devices
Terrasync

New! *Wind Image - Stand Alone*

Try our New Wind Image Stand Alone software today. Our new Stand Alone version allows users to process images outside of any other program. Stand Alone can generate the following outputs:

- Kml & Kmz files - For easy viewing in ArcGIS Explorer and Google Earth as well as other programs.
- Google Maps - Create interactive web pages that can be easily incorporated into your website.
- ESRI file format - Create image linked shape files
- Reporting - Create Microsoft Word document, Text and CSV file reports.
- Advanced Image Imprinting - Imprint Text, Logos, GPS data, Ricoh memo data and more.
- Ricoh Tracklog Import - Import Ricoh track log files and output to kml & kmz or use them in the Google Map export.
- Image Offsetting & Field of View - When generating Kml, Kmz and Google maps; users can select to offset images based on laser distance data embedded in the image EXIF. As well as show the projected field of view of the image.

Our solutions are developed by GIS professionals for GIS professionals.

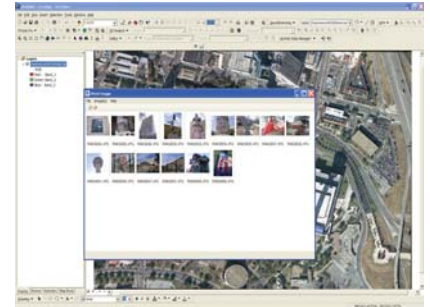
For more information contact your local dealer today or visit our website!

www.WindImage.com

Wind Image Seamless Image Integration

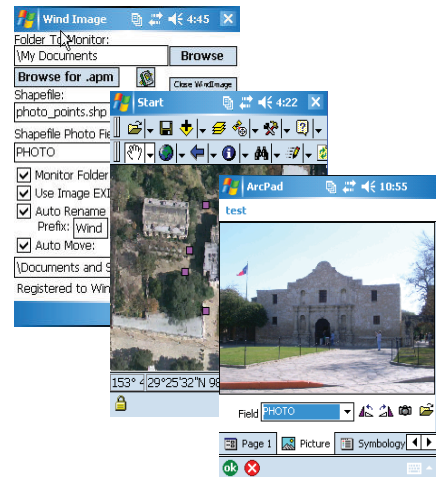
Wind Image for ArcMap

Flawless image integration for ArcGIS users. Imprint date time, GPS position and attributes right onto your photos. Process photos into hyperlinked and raster embedded datasets and process Ricoh track-logs. Wind image supports all coordinate systems supported within ArcMap and all ESRI Geo-database types (Personal, File and ArcSde). Other Features include: Native Support in both ArcMap and ArcReader for viewing raster embedded datasets, photo thumbnail viewer, a robust set of photo editing tools and integrated layout tools for printing maps with your images.



Wind Image for ArcPad

Seamless image integration into ESRI ArcPad. Wind Image for ArcPad works with any Bluetooth, Wifi or PDA Camera. Add or Edit images for existing features in ArcPad (points, lines and polygons). Automatically allows users to create new point locations in ArcPad as images are received from camera it will automatically move images once they are received to other destinations such as the SD card and rename images as they are received to eliminate overwriting existing images. Wind Image reads the EXIF data from the Ricoh 500 SE camera as the images are received and automatically embeds the information into your shapefile in ArcPad.



Wind Image Transfer

Wind Image Transfer allows for easy connectivity between the Ricoh 500SE-Wifi camera and Trimble Devices*. Transfer allows users to select the location where images are delivered and enables images to be sent from the camera automatically as soon as the picture is taken. Built in Viewer allows users to view pictures as they are received on the mobile device. Wind Image Transfer delivers images for use with any application such as ArcPad and TerraSync.

Bonus Feature:

Only occupies WIFI connection while in use, once Transfer is closed WIFI service is available for other connections.



Contact your local dealer today for more information.

DuraTech USA Inc.
A Certified 8(a), SDB, DBE, SBE, MBE, WBE firm.
6765 Westminister Ave #314 Westminister, CA 92683
Phone: (714) 898-2171 Fax: 866-704-9132
Email: sales@DuraTechUSA.com www.DuraTechUSA.com